

SPINEXPO™ WRAP

WEAR & BREAKAGE

FALL/WINTER 2020



SPINEXPO™ IS THE LEADING INTERNATIONAL SOURCING EXHIBITION DEDICATED TO PROMOTING INNOVATIONS IN YARNS, FIBRES AND KNITWEAR



DESIGNERS

This season the designers worked into the five different trend directions, with Shanghai based Steven Oo and Italian based Rory Longdon leading the team with their individual interpretations in both garments and swatches, each with their own handwriting providing an interesting contrast of textures and stitches. Designer Helga Matos experimented with smart technology in her beautiful weavings while Laura McPherson, Odina Keim, Katie Hanlan and Jo Bee provided their creative solutions for knitted innovations.

Eva DeLaat in collaboration with Carola and Santoni partnered together to provide new visions on activewear





Diversity tears up the rulebook and intensifies our self-awareness. Masculine and feminine are no longer fixed concepts but a melting pot of elements that lead to gender fluidity. Fragmentation and product transparency are the order of the day for a democratic luxury that is accessible to everyone, a social face based on the “real me”, the link between autonomy/cohesion/evolution and the search for simplicity and comfort that are considered essential values.

PERSONAL PATTERNS

DEMOCRATIZING NOBLE FIBRES

18-1612 TCX
ROSE TAUPE



16-1219 TCX
TUSCANY



13-0822 TCX
SUN LIGHT



18-1306 TCX
IRON



16-0205 TCX
VINTAGE KHAKI



16-4404 TCX
ABYSS



18-1421 TCX
COGNAC



15-1216 TCX
PALE KHAKI



16-0836 TCX
RICH GOLD



18-1537 TCX
COPPER COIN



Performance and evolution stem from the link between production and consumption, innovation generates more authenticity, balance and stability, and community spirit, innovation and active and connected enterprise are synonymous with the integration, preparation and transformation of technological products. The search for the comfort provided by elastic and stretch fabrics, for more intelligent, functional clothing, the collection of biometric data to create clothes designed to fit the human frame, all that enables evolution, opportunities, a potential for progression towards a development of materials and shapes.

MEMORIES & PERFORMANCES

SEEKING FUNCTIONALITIES

19-4022 TCX
PARISIAN NIGHT



13-5304 TCX
RAINY DAY



16-1346 TCX
GOLDEN OCHRE



17-4412 TCX
SMOKE BLUE



17-3933 TCX
SILVER BULLET



16-1539 TCX
CORAL



14-0446 TCX
TENDER SHOOTS



13-0650 TCX
SULPHUR SPRING





If we leave the safety of our cocoon, we come face to face with instinctive reactions and discover tolerance, a section based on antagonism, contradiction, change and conflicting combinations. No fibre exists independently of another, the new blends bring with them new products. The mix of different styles inspired by a modern-day rural nomadism, a hodgepodge of combinations, multicultural details and different forms, a desire for daily protection that allows us to live our day-to-day lives.

DISRUPTION

RECYCLING COLOURS & STITCHES

15-1046 TCX
MINERAL YELLOW



19-5420 TCX
EVERGREEN



19-0201 TCX
ASPHALT



19-1245 TCX
ARABIAN SPICE



18-3714 TCX
MULLED GRAPE



18-0220 TCX
MAYFLY



18-2140 TCX
CABARET



17-3014 TCX
MULBERRY



Vintage & neutrality – reshaping and breaking the mould, accepting diversity, ethnicity and sustainable development. The traditional raw materials and new materials are reinventing themselves by integrating plastic. An “unfinished” look to fit the concept of recycling – contrasting materials with grainy, plant-like textures and blends of natural and high-tech fibres.

REFUGE

REVISITING MATERIALS & PADDINGS

19-4826 TCX
DRAGONFLY



19-2430 TCX
PURPLE POTION



14-4807 TCX
SURF SPRAY



18-0521 TCX
BURNT OLIVE



16-3920 TCX
LAVENDER LUSTRE



19-3939 TCX
BLUE PRINT



18-1222 TCX
COCOA BROWN



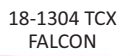
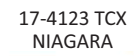
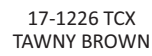
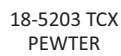
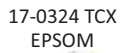
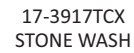
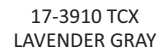
13-3804 TCX
GRAY LILAC



14-5002 TCX
SILVER

EMERGENCE

13-1010 TCX
GRAY SAND

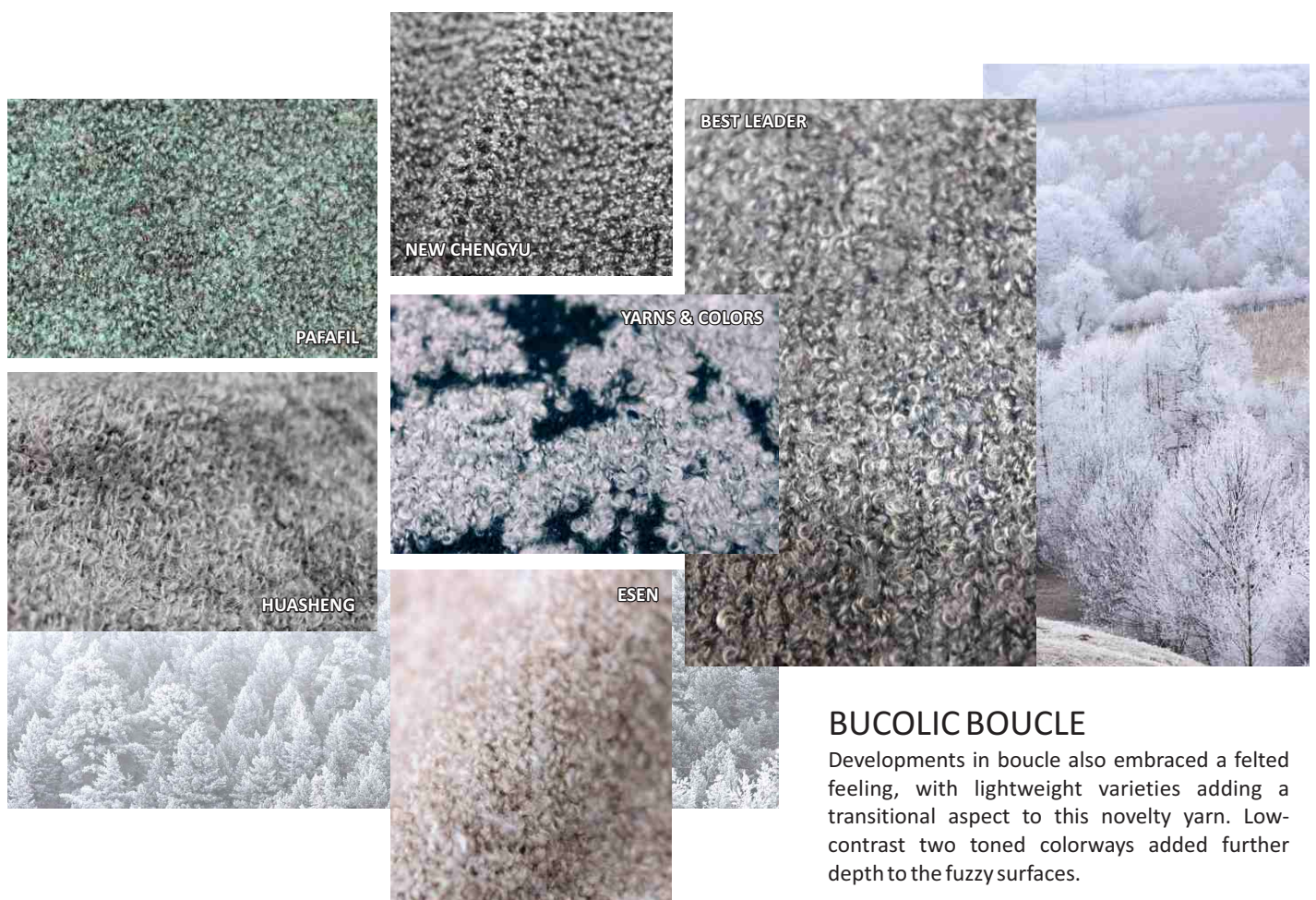


Innovations in fall yarns focused on subtle and sophisticated finishes that had a more rustic feel than products from last year, with a real emphasis on the inherent texture of the yarns. Felted and boiled looks were predominant, with updates featuring soft hand-feels and heather colorways that added to the hazy appearance of these yarns.



FIBROUS FINISH

Downy surfaces were offered via long eyelash yarns and mohair blends, with a more unruly and matted effect evolving these yarns from past seasons, inspiring outerwear directions in addition to cocooning novelty items.

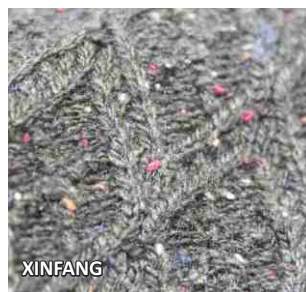


BUCOLIC BOUCLE

Developments in boucle also embraced a felted feeling, with lightweight varieties adding a transitional aspect to this novelty yarn. Low-contrast two toned colorways added further depth to the fuzzy surfaces.



GOOD HORSE



XINFANG



NEW CHENGYU



EASTAR



CONSINEE



GOOD HORSE



SHILEAD



DREAMY DONEGAL

Tweed and marled yarns evoked a traditional fall feel for wool blends this season and were highlighted in rich autumnal shades of moss, berry and chestnut.



HUASHENG



FILARMONIA



UNIQUE



HUBO



EASTAR



TOP LINE



LOYAL LIGHT

RUSTIC LUXE

Sparkling elements were added to rustic novelty yarns via metallic filaments and tiny sequins, creating a fresh juxtaposition between the homespun feel of the yarns with the more sophisticated twinkling facets.



ETOL



TOP LINE



ZHONGDING



M.ORO



HONGYE



AA GLOBAL



COSY & COMPACT

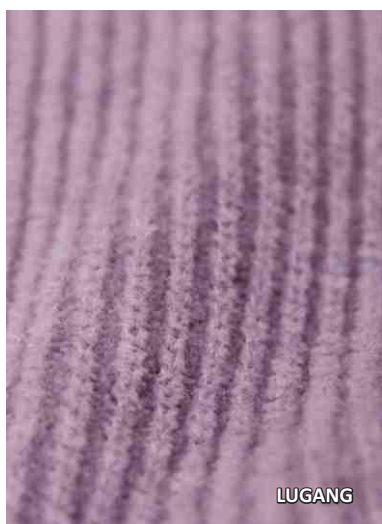
Cashmere and wool yarns were re-envisioned in slightly larger gauges, which were displayed in compressed texture and lace stitches, pairing well with the fibres for a softly 3D look.



NEW CHENGYU



HUASHENG



LUGANG



GUOHUA



YARNS & COLORS



TOP LINE



HUBO

PASTORAL PLUSH

Micro chenille and plush eyelash yarns evoke the downy seed-heads of early autumn; ethically sourced angora fibres add a luxury touch to these sumptuous items.



BEST SHAN



HUBO



AA GLOBAL



SAPIENS



TOP LINE



BROLLA



MISTY WARMTH

Novelty chunky yarns progress for the new season with quiet weathered elements; yarns appear brushed or distressed before knitting, allowing a misty and irregular effect to appear.



ZHONGXIN



BROLLA



EASTAR



ZHONGXIN



GOOD HORSE



LOYAL LIGHT

AUTUMN SATURATION

A rich palette jewel colours informed bright novelties as spinners experimented with painted, tweed like and boucle yarns, adding a joyful and exuberant element to the seasonal offering.