



# STOLL

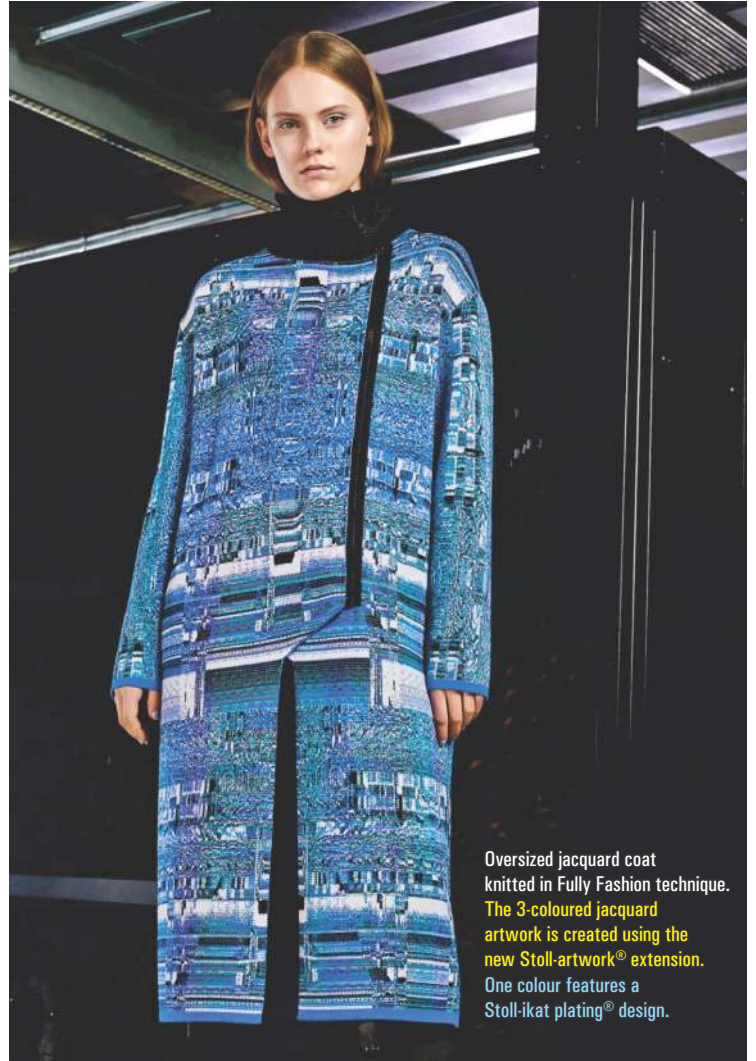
AUTUMN WINTER 2019/20  
TREND COLLECTION

## DIGITAL KNITS

This Year's collection was not only designed and knitted using digital technology, but inspired by digital design concepts. Every Single Piece has A Digital Look and Feel. Pixelized Artworks are overlaid onto techy silhouettes. Natural Fibres crossover with manmade fibres. Finishing methods like felting emphasize the craftsmanship behind the creation process. Digital tools enrich traditional design techniques. We Call It Digital Craftsmanship. The collection was partly designed and developed using new digital tools like **STOLL-ARTWORK®** and **STOLL-AUTOCREATE®**. **STOLL-ARTWORK®** is a Brand new Design Tool That adds Knitwear-specific Features To Adobe® Photoshop®. Features like automatic control tools and stitch distortion simulation (to Name A Few) Make creating artworks substantially easier for the Knitwear Designer. Some of the artworks were then transferred to **STOLL-AUTOCREATE®** for more processing. Once the parameters of **STOLL-AUTOCREATE®** Have been set up, The process flow from Design Output to Knitting Machines makes manual programming Redundant – Making it the perfect platform for businesses where mass customization plays a role. Beyond the digital content of this collection, You will find garments with visually exciting designs and futuristic functions, Carried out using our latest machine features. prepare to be inspired.



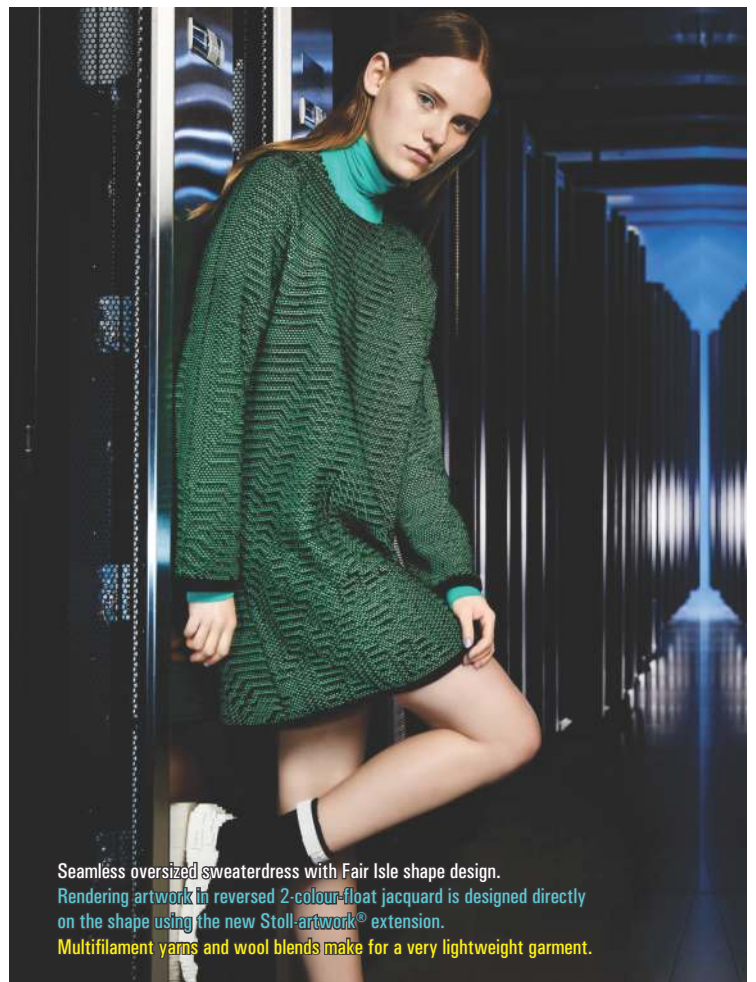
Seamless boxy sweater with Fair Isle shape design.  
 Rendering artwork in 2-colour-float jacquard construction.  
 The artwork continues jointlessly into the tubular hem.  
 Multifilament yarns and wool blends make for a very lightweight garment.  
 The float jacquard is designed directly on the shape using the new Stoll-artwork® extension.



Oversized jacquard coat knitted in Fully Fashion technique.  
 The 3-coloured jacquard artwork is created using the new Stoll-artwork® extension.  
 One colour features a Stoll-ikat plating® design.



One-piece cross-functional body in Fully Fashion technique with a seamlessly integrated shoulder and collar solution.  
 Core-spun Lycra® with three different stretch properties are placed in those body zones where either support or compression is needed.  
 These elastic threads are invisibly plated on the inside of the fabric.  
 The front and back part of the slip are bridged with an additional weft insertion to distribute compression equally.  
 Mesh structures are integrated for ventilation, a better fit and for comfort.



Seamless oversized sweaterdress with Fair Isle shape design.  
 Rendering artwork in reversed 2-colour-float jacquard is designed directly on the shape using the new Stoll-artwork® extension.  
 Multifilament yarns and wool blends make for a very lightweight garment.



Two-piece tights in fine gauge.  
 Traversal knitting direction with ikat-plated artwork insertion.  
 Artwork design for Stoll-ikat plating® with colour shade effect.  
 Jointlessly knitted-on waistband with body-forming effect.  
 Weft insertion with silicone yarn for better adhesion on the skin.



Sockstyle shoe with heating integration around the toes.  
 Upper is made in Fully Fashion.  
 The fabric properties come from felting and invisibly-plated thermoplastic material in selective areas.  
 Bidirectional digital interface from Myant Inc.'s textile computing platform.



Fully Fashion, traversal kimono-style shirt, knitted in one piece.  
 Fabric construction in 3-colour piqué with weft insertion built into the graphic at the hem section.  
 Using Stoll-autocreate® together with Stoll-artwork® allows for customizable artwork and artwork positioning.



3D-shaped Fully Fashion cross body bag.  
 Integrated functions include zipper ports and overlap, strap tunnel and a woven-like inside pocket.  
 The robustness of the outer shell comes from a combination of interlock structure and PES plating on silicone base.